

a v s h a
b i l g r a m i

LOOKBOOK



ensō

COLLECTION NO. 15

COLLECTION NO.15 - Ensō, heralds the celebration of the brand's 10-year journey. This collection celebrates our iconic shapes, cultural fusion, and commitment to conscious craftsmanship.

The Ensō, inspired by the Japanese Zen circle, is a symbol of absolute enlightenment, strength, and the universe's elegant embrace. In its simplicity, it captures the essence of imperfection as an inherent part of existence, reminding us of the beauty within life's constant flux.

Number 10 marks a decade of Aysha Bilgrami Jewelry, meaning change and new beginnings, the number 15, encourages innovation and evolution, signaling the time to take risks and manifest something new. Numerology is a belief system that assigns mystical and symbolic meaning to numbers. It is based on the idea that numbers, beyond their mathematical properties, possess inherent qualities and vibrations that can influence human life and events. The above has ancient roots and has been practiced in various forms across different cultures. Each piece contains the spirit of Ensō as well as the magical symbolism associated with numerology.

Our hallmark shapes and textures such as pendulums, crescent moons, granulated sphere details, and earrings inspired by tribal perforations evolve as we enter a new era. This collection showcases our cultural inspiration into our jewelry and transcends into a more contemporary look with our new mix of materials where sterling silver is paired up with semi-precious stones such as emeralds, lapis lazuli, citrine and agates, glass, and bull's horn. As part of our commitment to sustainability, we continue giving a second life to materials, specifically to our prime material, sterling silver, which is recycled and recovered from x-rays.

In this harmonious dance between Ensō and numerology, Aysha Bilgrami Jewelry invites you to explore a collection that transcends mere adornment. It is a celebration of timeless design, cultural dialogue, and the profound symbolism woven into each piece—a symbolic fusion that echoes both the simplicity of the circle and the depth of numerical essence resulting in an heirloom treasure.



ENSO EMERALD DROP EARRINGS - ENSO LAPIS DROP EARRINGS



ENSO LAPIS DROP EARRINGS



ENSO HOOP EARRINGS



ENSO DROP EAR CUFF GLASS - ENSO DROP EAR CUFF EMERALD



UM TURQUOISE PENDANT



ENSO HOOP BLING EARRINGS





FYRA EARRINGS



FYRA EARRINGS



FYRA EARRINGS



BABY CRESCENT HOOP STONE - SAN GOLI EAR CUFF



BABY CRESCENT HOOP STONE - SAN GOLI EAR CUFF



TRIPLE TOTONA RING EAR CUFF



SAN GOLI HOOP - SAN GOLI EAR CUFF - SAN GOLI EAR CUFF



LIU RING EAR CUFF - TRIA EARRINGS



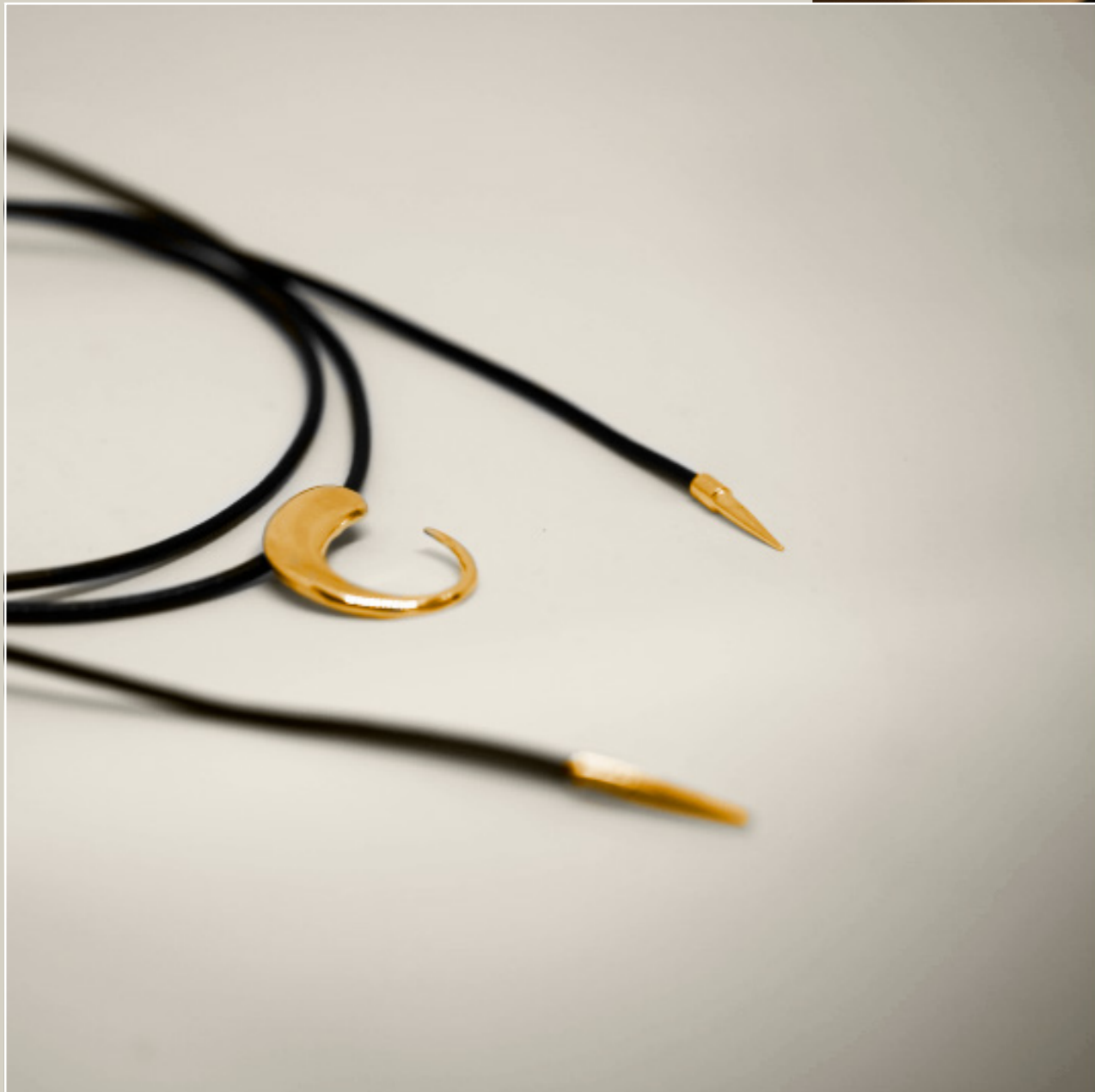
TIGA BRACELET - TRIPLE TOTONA RING EAR CUFF - LIU RING EAR CUFF - TOTONA RING EAR CUFF - VAYU RING



TIGA EARRINGS



UM BRACELET - TIGA EARRINGS



ENSO NECKLACE



BAY NECKLACE



TIGA BRACELET -UM BRACELET -VAYU RING



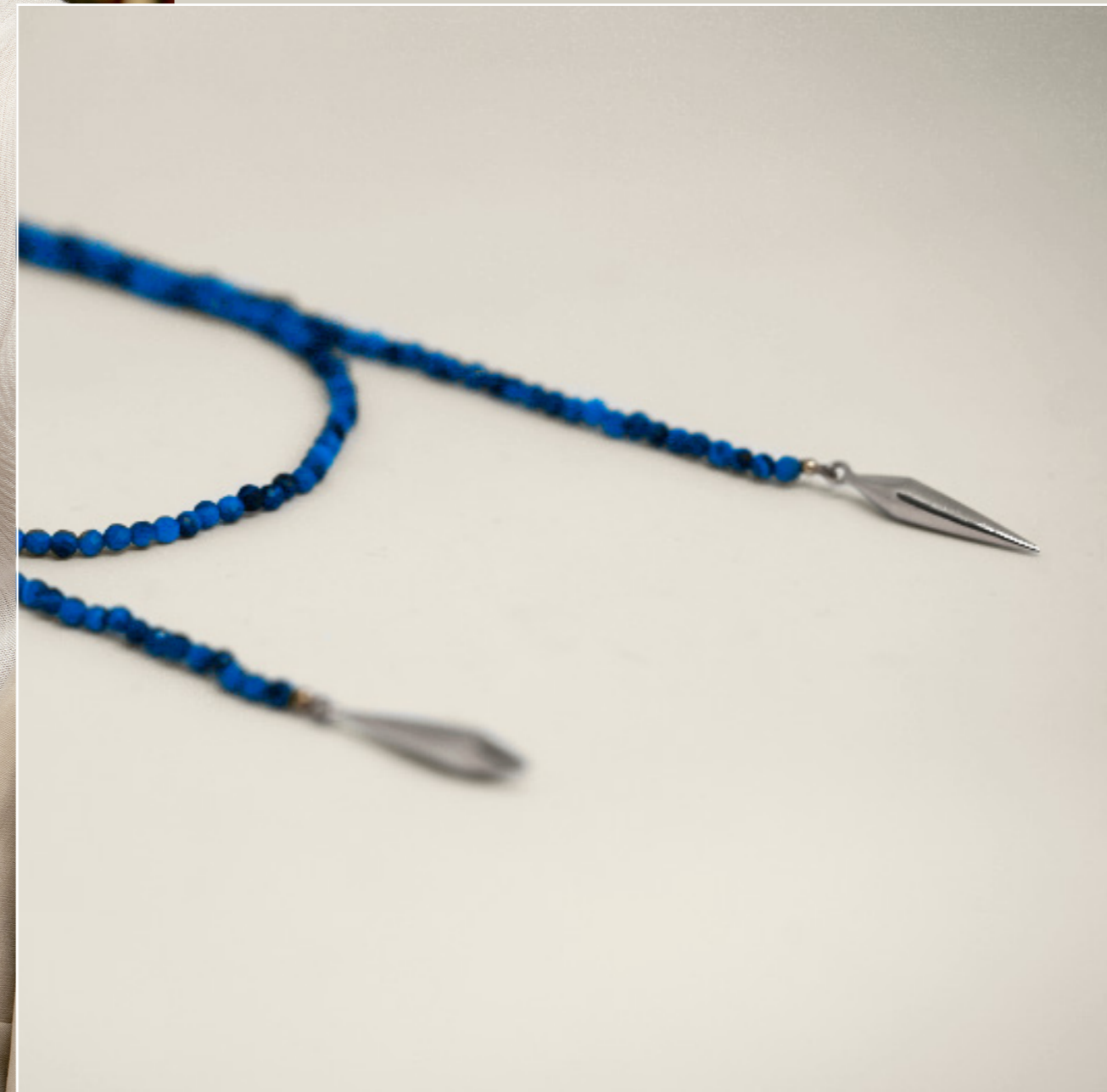
TIGA CHAIN - FYRA EARRINGS



TRIA EAR CUFF



UM BRACELET - TIGA BRACELET - VAYU PINKY RING EAR CUFF - TRIPLE TOTONA RING EAR CUFF



ENSO HOOP EARRING EMERALD - DUA NECKLACE MALAQUITA - DUA NECKLACE LAPIS



VAM CHAIN LONG - VAM CHAIN MEDIUM - VAM CHAIN



TOTONA CHAIN - VAM CHAIN MEDIUM - CRESCENT PENDANT AFRICAN TURQUOISE - TIGA CHAIN - TRIA EARRINGS - CRESCENT PENDANT LAPIS



UM BRACELET - LIU RING EAR CUFF - TRIPLE TOTONA RING EAR CUFF



WWW. AYSHABILGRAMI. COM

Cll 70 # 9-83 - Bogotá, Colombia